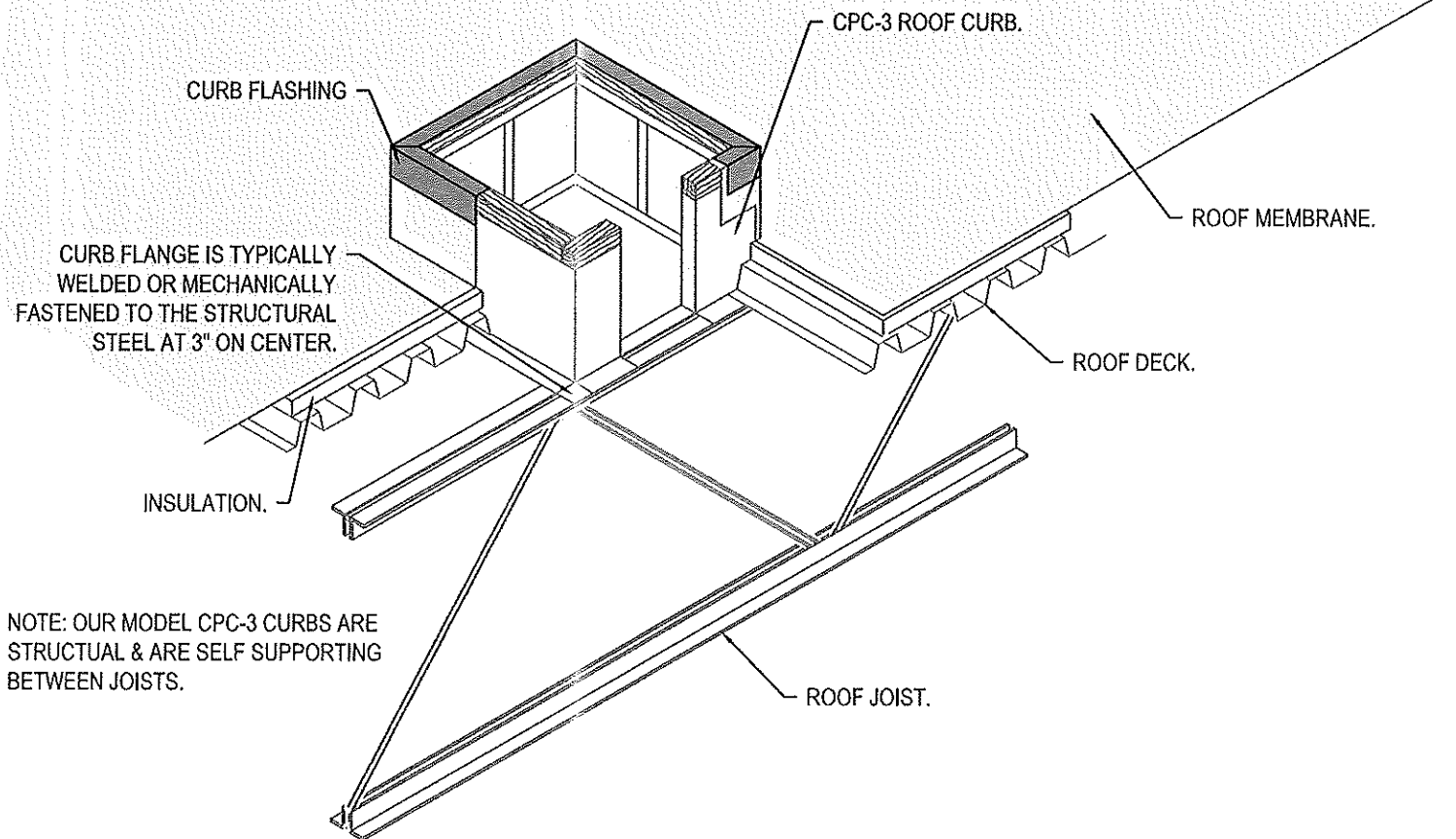


Drawing Date:

REV: 001

Approved By:

# CURBS PLUS, INC.



NOTE: OUR MODEL CPC-3 CURBS ARE STRUCTURAL & ARE SELF SUPPORTING BETWEEN JOISTS.

1. UPON RECEIVING THE NEW ROOF CURB, INSPECT IT FOR ANY DAMAGE THAT MAY AFFECT THE STRUCTURAL INTEGRITY OF THE CURB. (SUCH AS DEFORMATIONS OR BROKEN WELDS)
2. LOCATE THE CURB ON THE SUPPORT STRUCTURE AND ATTACH AS REQUIRED BY LOCAL CODE/ENGINEER.
3. ATTACH THE ROOF DECK TO THE CURB FLANGE AS REQUIRED BY LOCAL CODE/ENGINEER.
4. INSTALL THE ROOF INSULATION AND FELTS/MEMBRANE PER THE MANUFACTURES SPECIFICATIONS.

PROJECT NAME:

CITY, STATE:

CUSTOMER:

JOB NUMBER

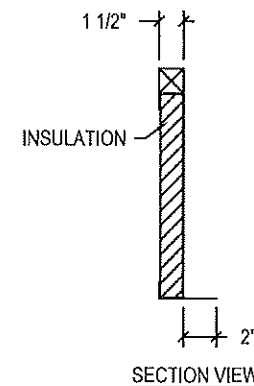
### CPC-3 (Insulated) Conventional Roof Curb

#### STANDARD FEATURES

1. 18 Ga. Prime Galvanized Steel Construction.
2. Fully Welded Watertight One-piece Construction.
3. Prime Painted after Fabrication.
4. Pressure Treated 2x2 Wood Nailers.
5. 1 1/2" Thick, 3# Density Fiberglass Insulation.
6. Internal Angle Reinforcing.

#### OPTIONS

- 1.
- 2.

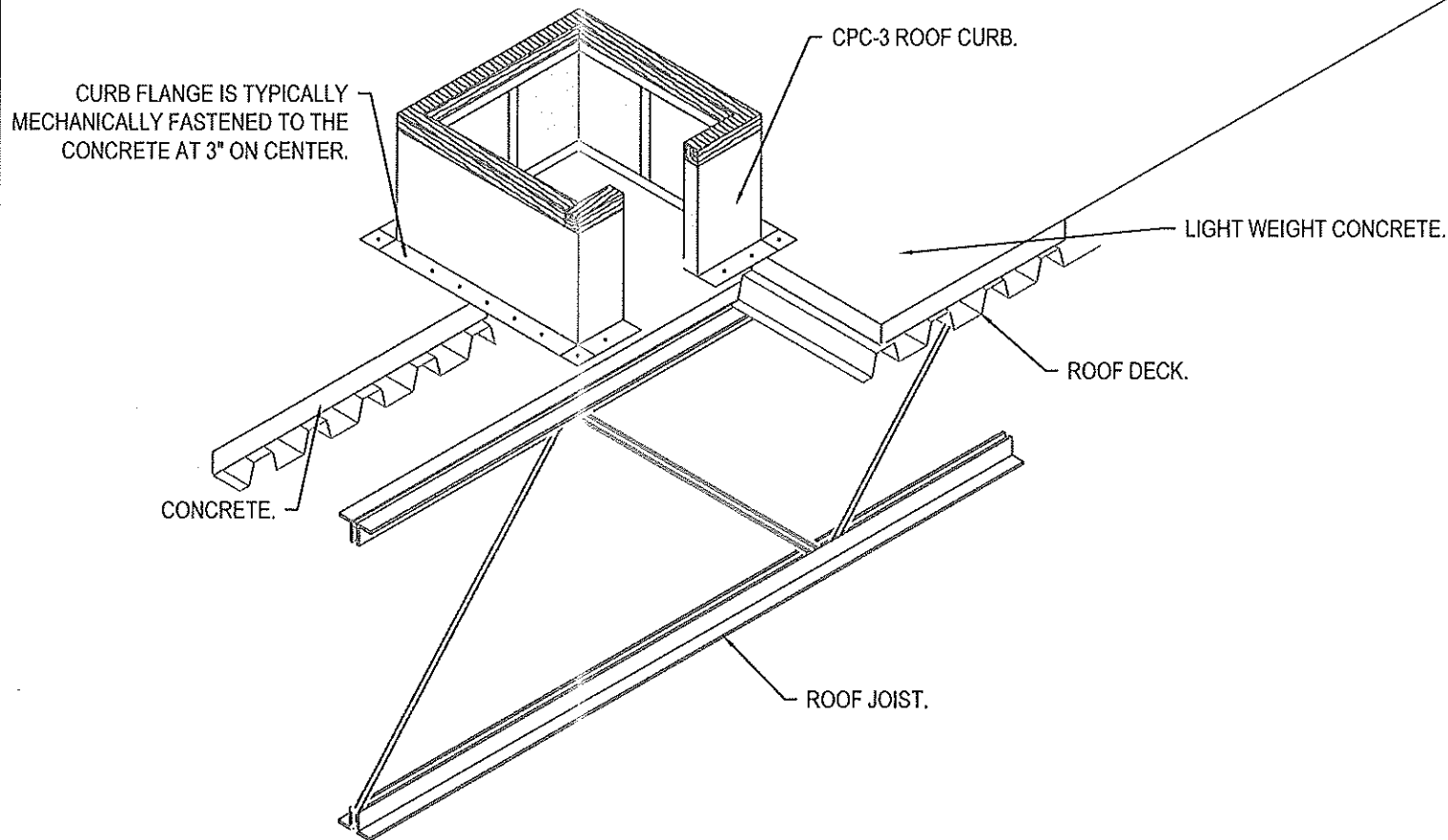


Drawing Date:

REV: 001

Approved By:

**CURBS PLUS, INC.**



PROJECT NAME:

CITY, STATE:

CUSTOMER:

JOB NUMBER

**CPC-3 (Insulated) Conventional Roof Curb**

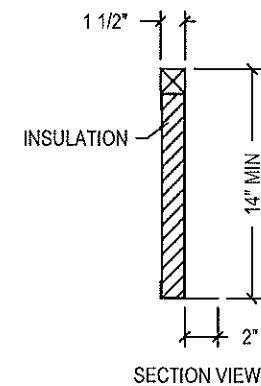
**STANDARD FEATURES**

1. 18 Ga. Prime Galvanized Steel Construction.
2. Fully Welded Watertight One-piece Construction.
3. Prime Painted after Fabrication.
4. Pressure Treated 2x2 Wood Nailers.
5. 1 1/2" Thick, 3# Density Fiberglass insulation.
6. Internal Angle Reinforcing.

**OPTIONS**

- 1.
- 2.

1. UPON RECEIVING THE NEW ROOF CURB, INSPECT IT FOR ANY DAMAGE THAT MAY AFFECT THE STRUCTURAL INTEGRITY OF THE CURB. (SUCH AS DEFORMATIONS OR BROKEN WELDS)
2. LOCATE THE CURB ON THE SUPPORT STRUCTURE AND ATTACH AS REQUIRED BY LOCAL CODE/ENGINEER.
3. ATTACH THE CURB FLANGE TO CONCRETE AS REQUIRED BY LOCAL CODE/ENGINEER.
4. INSTALL THE ROOF INSULATION AND FELTS/MEMBRANE PER THE MANUFACTURES SPECIFICATIONS.

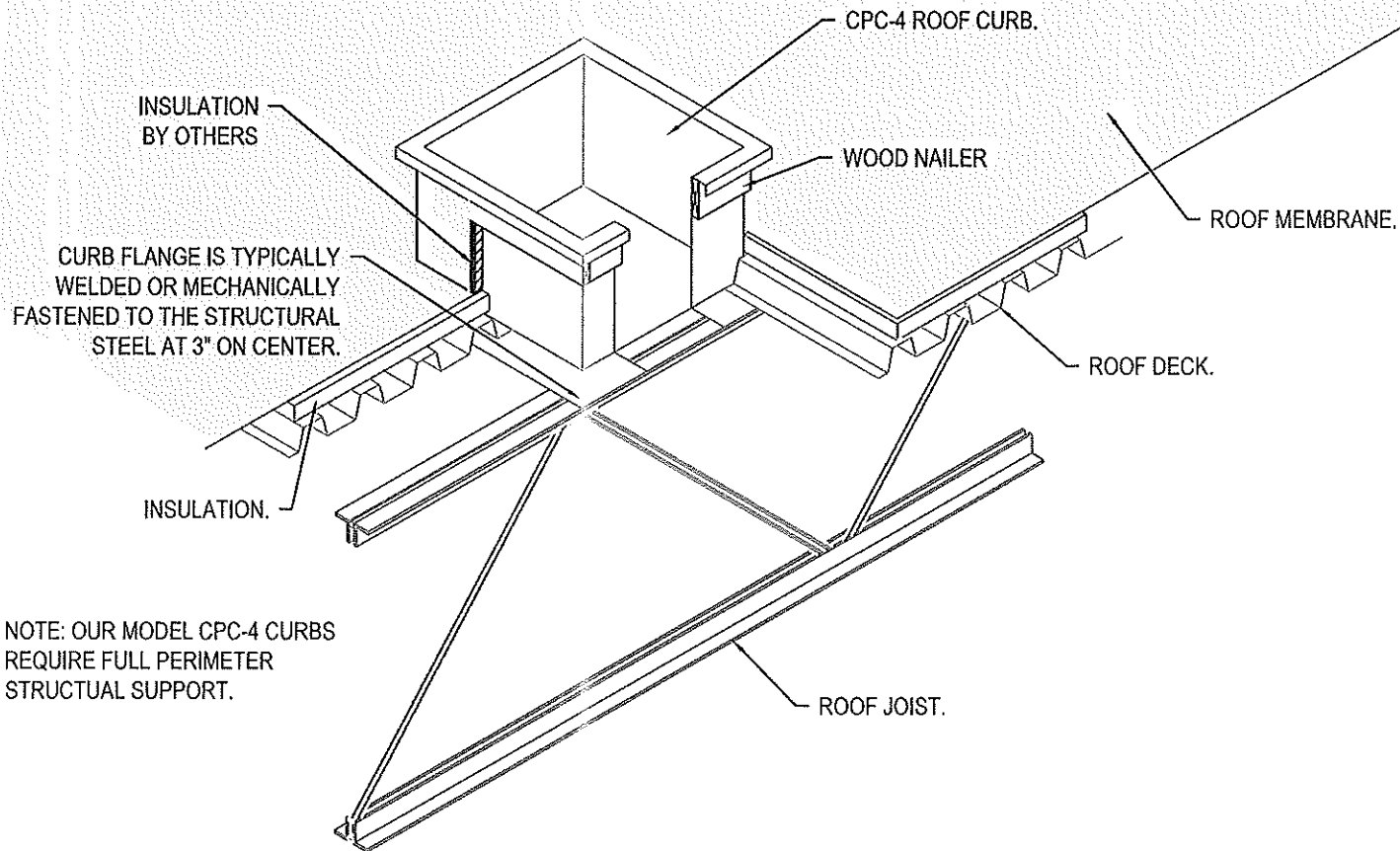


Drawing Date:

REV: 001

Approved By:

**CURBS PLUS, INC.**



NOTE: OUR MODEL CPC-4 CURBS REQUIRE FULL PERIMETER STRUCTUAL SUPPORT.

1. UPON RECEIVING THE NEW ROOF CURB, INSPECT IT FOR ANY DAMAGE THAT MAY AFFECT THE STRUCTUAL INTEGRITY OF THE CURB. (SUCH AS DEFORMATIONS OR BROKEN WELDS)
2. LOCATE THE CURB ON THE SUPPORT STRUCTURE AND ATTACH AS REQUIRED BY LOCAL CODE/ENGINEER.
3. ATTACH THE ROOF DECK TO THE CURB FLANGE AS REQUIRED BY LOCAL CODE/ENGINEER.
4. INSTALL THE ROOF INSULATION AND FELTS/MEMBRANE PER THE MANUFACTURES SPECIFICATIONS.

PROJECT NAME:

CITY, STATE:

CUSTOMER:

JOB NUMBER

CPC-4 Conventional Roof Curb

STANDARD FEATURES

1. 18 Ga. Prime Galvanized Steel Construction.
2. Fully Welded Watertight One-piece Construction.
3. Prime Painted after Fabrication.
4. Pressure Treated 1x4 Wood Nailer.
5. No Insulation.
- 6.

OPTIONS

- 1.
- 2.



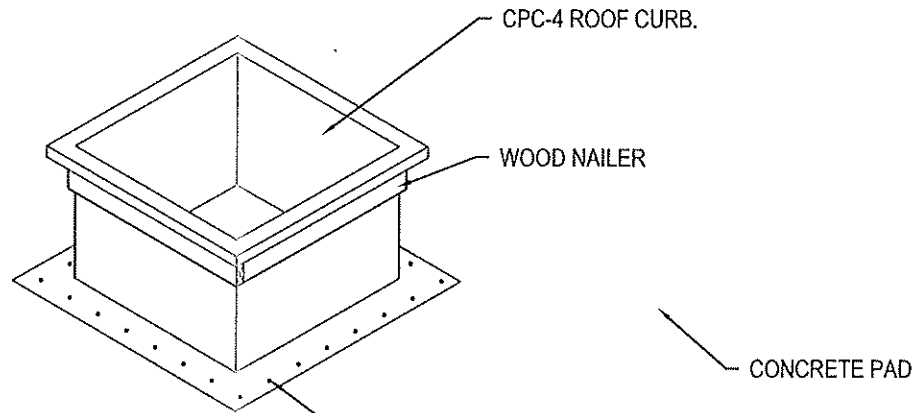
SECTION VIEW

Drawing Date:

REV: 001

Approved By:

**CURBS PLUS, INC.**



CURB FLANGE IS TYPICALLY MECHANICALLY FASTENED TO THE CONCRETE PAD ON 3" ON CENTER.

NOTE: OUR MODEL CPC-4 CURBS REQUIRE FULL PERIMETER STRUCTUAL SUPPORT.

1. UPON RECEIVING THE NEW ROOF CURB, INSPECT IT FOR ANY DAMAGE THAT MAY AFFECT THE STRUCTUAL INTEGRITY OF THE CURB. (SUCH AS DEFORMATIONS OR BROKEN WELDS)

2. LOCATE THE CURB ON THE SUPPORT STRUCTURE AND ATTACH AS REQUIRED BY LOCAL CODE/ENGINEER.

PROJECT NAME:

CITY, STATE:

CUSTOMER:

JOB NUMBER

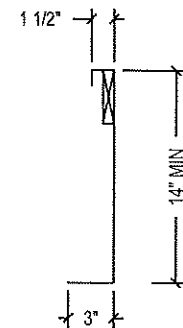
CPC-4 Conventional Roof Curb

STANDARD FEATURES

1. 18 Ga. Prime Galvanized Steel Construction.
2. Fully Welded Watertight One-piece Construction.
3. Prime Painted after Fabrication.
4. Pressure Treated 1x4 Wood Nailer.
5. No Insulation.
- 6.

OPTIONS

- 1.
- 2.



SECTION VIEW