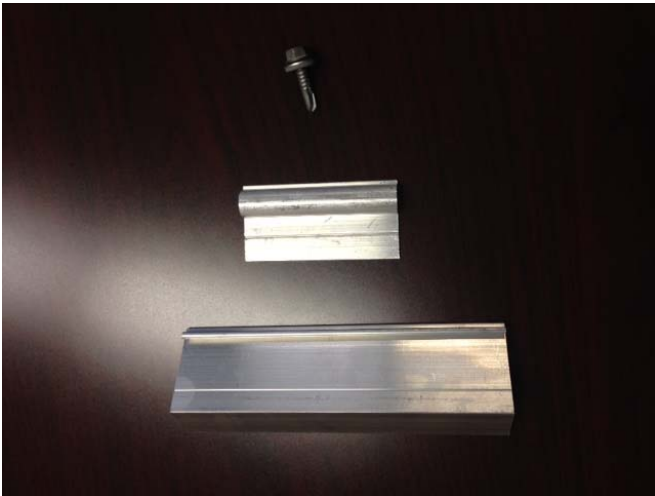


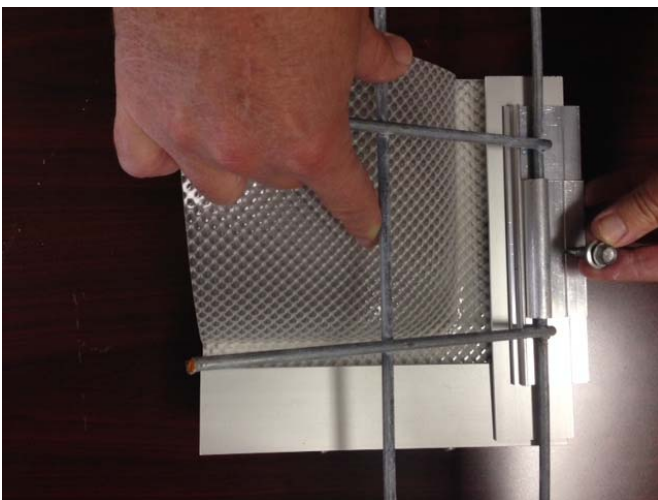


The new name for
Bristolite Daylighting Systems
harvesting daylight for energy savings

Retro fit Safety Guard installation on existing Naturalite Heat and Smoke vents



The pre curved cages will be accompanied by an accessory box containing enough angles, clips and fasteners to complete the installation. 8 sets per cage (4 per side).



- Place the cage over the skylight dome
- Evenly place 4, 6" angles along each side of the skylight
- Engage the safety guard clip over the cage wire and into the receiver of the angle.
- Using a #14x1 self-tapping fastener with sealing washer, fasten the clip and angle into the existing frame locking the cage in place. Fastener should be placed on the provided die line for alignment.
- This will be accomplished 4 times per side