



Smoke Vents

Inspection + Maintenance



Overview

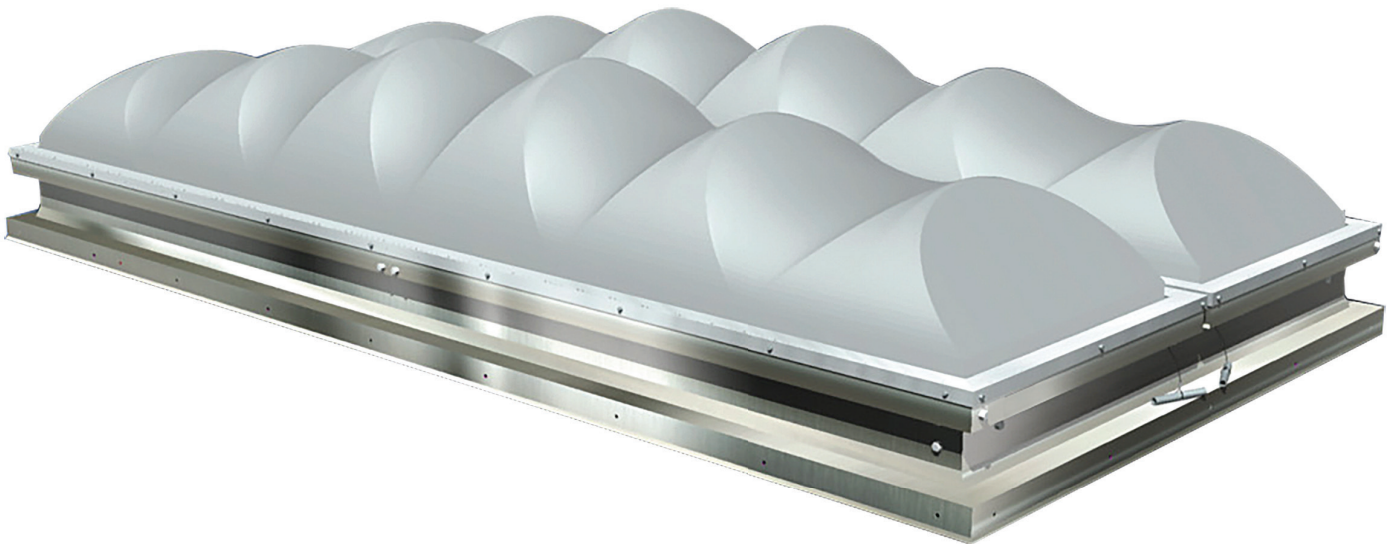
As per NFPA 204 Standard for Smoke and Heat Venting, "Smoke and heat venting systems and mechanical smoke exhaust systems shall be inspected and maintained in accordance with Chapter 12 [Inspection and Maintenance]." The following is Kingspan Light + Air's (KLA) suggested outline of scheduling, inspection, and maintenance of existing smoke vents. The actual requirements are set by the building owner and local municipalities.

Inspection Schedule:

Annual inspection schedules for each smoke vent shall be written out detailed with dates and procedures. Any special mechanisms, such as gas shocks, shall be inspected individually each year or as specified by the manufacturer.

Details to Note:

- Changes in appearance
- Damage to any components
- Fastening security
- Weather tightness
- Adjacent roofing and flashing condition
- Any deficiencies
- Any other pertinent items



Inspection Actions + Details

- Doors shall be activated by pulling on the manual release. Latches should immediately release smoothly and open moving through its designed travel. Doors should open fully without assistance or interruption which would indicate a faulty piston, sticking weather seal, or corroded bearings.
- With doors open, inspect the restraining cable system. Cabling should have ample tension and no frays. Observation shall be made of the whip and travel path of cable, noting any possible obstruction that would delay release of the doors. Any interference shall be corrected by removing obstruction and noted immediately.
- All operating levers, latches, hinges, fusible links and weather sealed surfaces shall be examined to determine conditions, such as deterioration and accumulation of foreign materials. An operational test shall be performed after removal or correction of any issues.

